

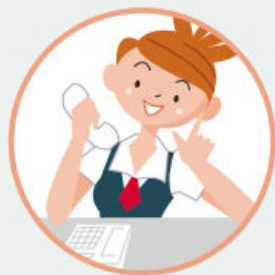
# ALPHA DIGITAL LOCK



SIMPLE and SMART



ALPHA® 是日本唯一，擁有近百年的建築五金、鎖具製造經驗的頂尖公司  
 全系列產品皆日本設計，全部由ALPHA自有的工廠製造，極致品質、可靠耐用  
 ALPHA® 電子門鎖產品遍及全日本國際機場、鐵路、捷運、公共場所、住宅  
 目前全球NISSAN® 汽車的門鎖系統也是由ALPHA® 獨家供應  
 ALPHA® 產品由十圖企業有限公司® 獨家代理，銷售、服務！



decrease in emergency service



no worry of key duplication



出門再也不用帶笨重的鑰匙

也免去鑰匙遭複製的高風險

您可以使用高度保密性編碼的觸控面板開啟系統

可任意更換密碼

或，使用感應卡、悠遊卡、感應扣來開啟大門

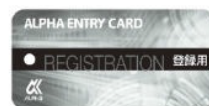


- 結構非常精巧細緻的鎖匣，耐用又非常堅固
- 兩片高剛性鎖栓中間還有一片擁有高反制破壞的倒鉤鎖栓，牢牢守護每一道大門另外，除了使用卡，還獨家配備「管理卡」，可直接管理、增加、刪除其他卡片的權限



User Card (3pcs included)

Tenant uses this card to lock/unlock. Up to 20 cards can be registered.



Registration Card  
(2pcs included)

It is used to register/delete password and user card, and change the setting.

- 原廠「漣漪淺渦式機械鑰匙」，一體成型，四面同時壓製出來的，幾乎無法複製！如果備用鑰匙遺失，取得序號、驗證、授權，由日本ALPHA原廠重新打造！
- 外置電池盒更換系統更方便，貼心



ALPHA DIGITAL LOCK

三款主體配色，完美搭配您的居家品味



時尚銀



深邃黑



玫瑰金



## 近百年歷史的ALPHA®公司簡介

1923年成立，以建材五金、鎖具起家，與當時日本工業化腳步一起成長

1933年開始製造TOYOTA和NISSAN的汽車鑰匙系統

1943年開始ALPHA®置物櫃的產品

1964年在日本開始製造的「投幣式置物櫃」至今，ALPHA®儼然已成為日本「置物櫃」的代名詞，已發展到功能極為先進，外觀細緻漂亮的感應式置物櫃，我們公司已引進台灣裝設在桃園機場、台北小巨蛋...；我們也同步代理先進安全，精緻可靠的ALPHA®電子門鎖讓消費者有更好的電子門鎖選擇！



## Durability & Strength

Up to 65 types of test are performed such as

### Water proof test

Water proof test for automotive part (JIS D0203-S2)

### Lock Cycles test

200,000 cycles test of electronic locking/unlocking

### Tension Test

2300N loaded to the lock

## Material

### Highest quality material

- Aluminum Body and Handle
- Stainless steel Deadlock
- Brass Latch

### Precision electronic part

The lock uses automobile PCB part. Car components are required to have the highest quality under strict conditions.

## Higher Security

### Pick Resistant

Dimple key with high anti-picking resistant

### Hook Throw Deadlock

Strong against forced opening

### Anticrime function

Inputting random numbers to prevent password stolen

## Variable Functions

### Auto Locking

Mechanical auto locking system

### Other functions

Tamper-proof mode/ Low battery warning/ Silent mode

## Card & Key Specification



User Card  
(3pcs included)

Up to 20 cards can be registered.



Registration Card  
(2pcs included)

It is used to register/delete password and user card, and change the setting.



Dimple key  
(2pcs included)

## Color



SILVER



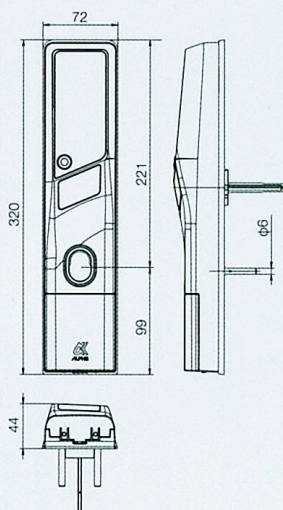
BLACK



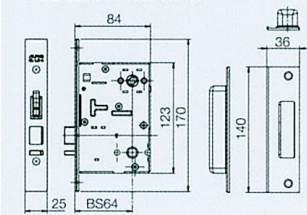
GOLD

## Outer Dimension & Handle Type

### DIGITAL LOCK WS200

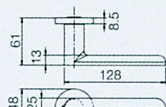


### CL-LE-A lock case

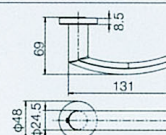


### handle

#### Straight Type



#### Arch Type



You can choose Arch Type handle or Straight Type handle. (Either one is contained.)

## List of Item No.

Variable door thickness	Color	Item No.	
		Straight Type Handle	Arch Type Handle
35-50	SILVER	9QA19-01800	9QA19-02200
	BLACK(MAT)	9QA19-11800	9QA19-12200
	BLACK	9QA19-21800	9QA19-22200
	GOLD	9QA19-31800	9QA19-32200
50-60	SILVER	9QA19-01900	9QA19-02300
	BLACK(MAT)	9QA19-11900	9QA19-12300
	BLACK	9QA19-21900	9QA19-22300
	GOLD	9QA19-31900	9QA19-32300
60-70	SILVER	9QA19-02000	9QA19-02400
	BLACK(MAT)	9QA19-12000	9QA19-12400
	BLACK	9QA19-22000	9QA19-22400
	GOLD	9QA19-32000	9QA19-32400
70-80	SILVER	9QA19-02100	9QA19-02500
	BLACK(MAT)	9QA19-12100	9QA19-12500
	BLACK	9QA19-22100	9QA19-22500
	GOLD	9QA19-32100	9QA19-32500

## Basic Specification

Backset	64mm
Spacing	80mm
Door thickness	35-80mm
Battery	AA alkaline battery 4pcs
Battery life	2 years *1
Handing	Right / Left (Changeable by setting main body)
Password	4-12 digits (Up to 2 passwords)
User card *2	MIFARE, FeliCa, Tag-it HF-I Pro

\*1 2 years (5 times of locking & unlocking operation a day at normal temperature)

\*2 We only guarantee our own card for the specification of the communication range.

• MIFARE is a registered trademark of NXP Semiconductors N.V.

• FeliCa is a registered trademark of Sony Corporation.

• Tag-it HF-I Pro is a registered trademark of Texas Instruments Incorporated.

# ALPHA Corporation

HEAD OFFICE  
1-6-8 FUKUURA, KANAZAWA-KU  
YOKOHAMA CITY, KANAGAWA PREF 236-0004, JAPAN

Home Page <http://www.kk-alpha.com>

\* We have acquired ISO9001 and ISO14001.

台灣獨家總代理



十圖企業有限公司

[www.stor.com.tw](http://www.stor.com.tw)

台北市士林區忠誠路一段173巷16號 02-2831-9776